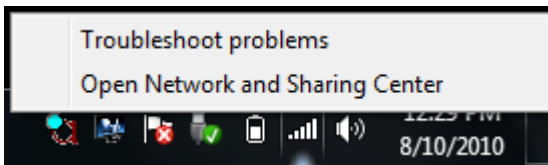
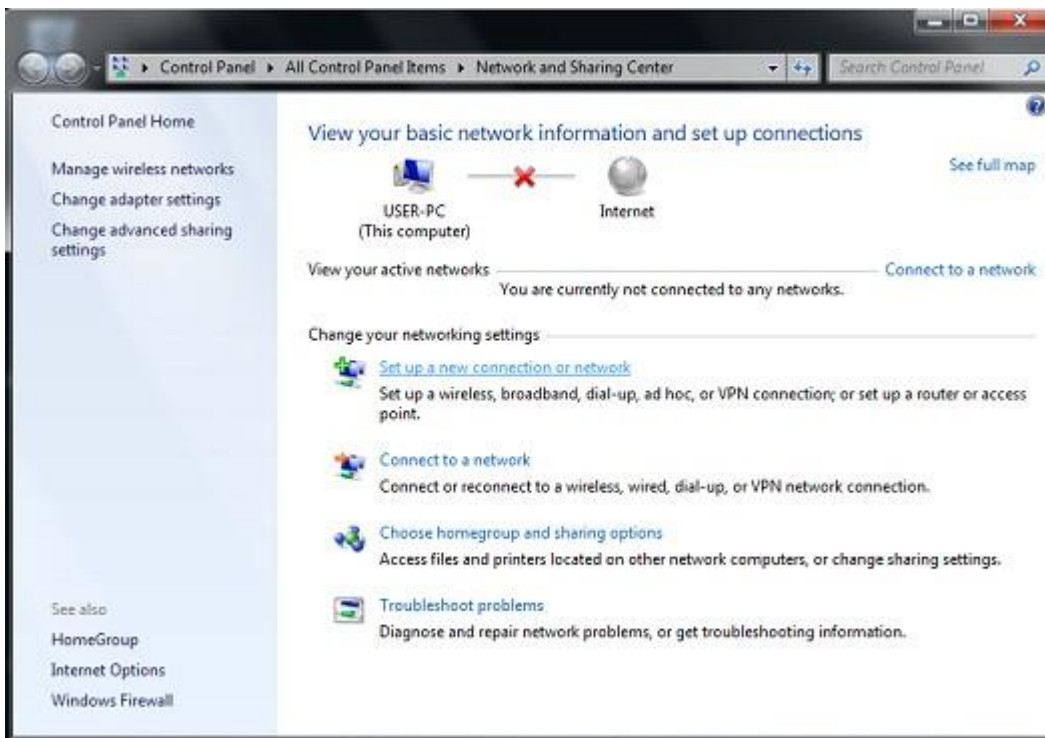


## Secure Wireless Connection in Windows 7 (WPA2)

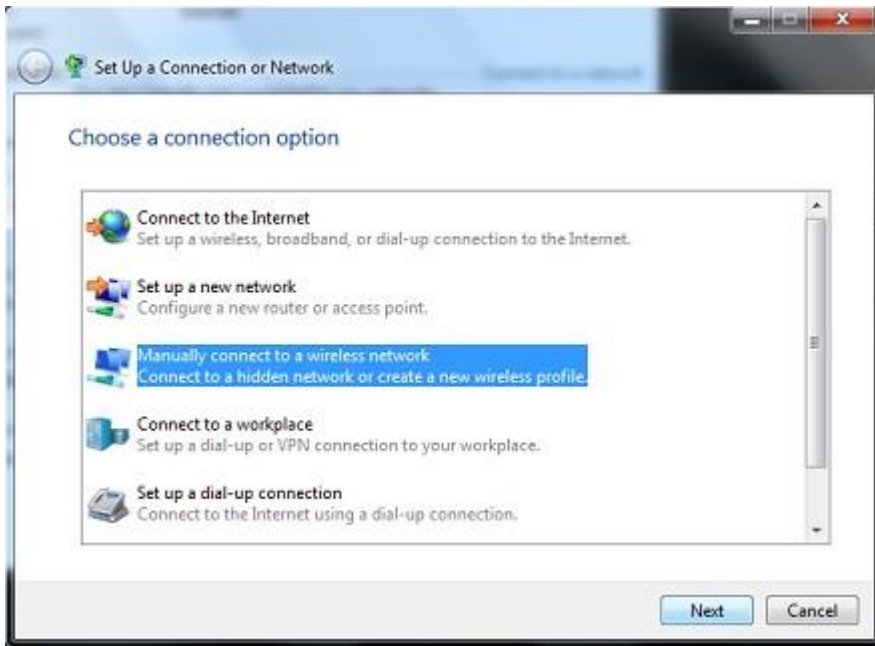
1. **Right click** the internet connection in the task bar and select **Open Network and Sharing Center**.



2. Click on **Set up a new connection or network**.



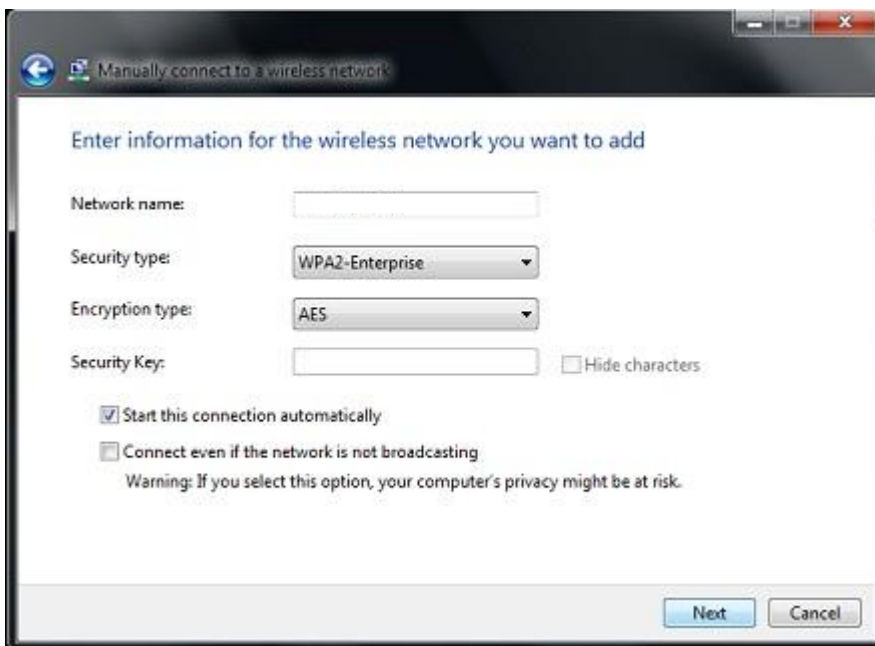
3. Select **Manually connect to a wireless network**. Click **Next**.



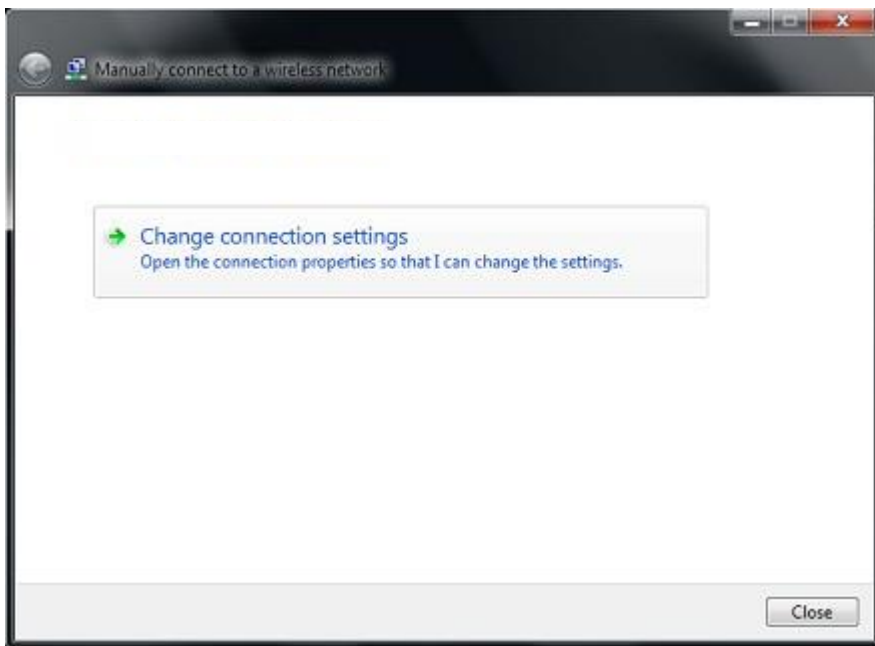
4. In this window enter the following:

- Network name : **STM - BYOD**
- Security type : select **WPA2-Enterprise**
- Encryption type will automatically select **AES** (this is correct).

Click **Next**.



5. In the next window click **Change connection settings**.



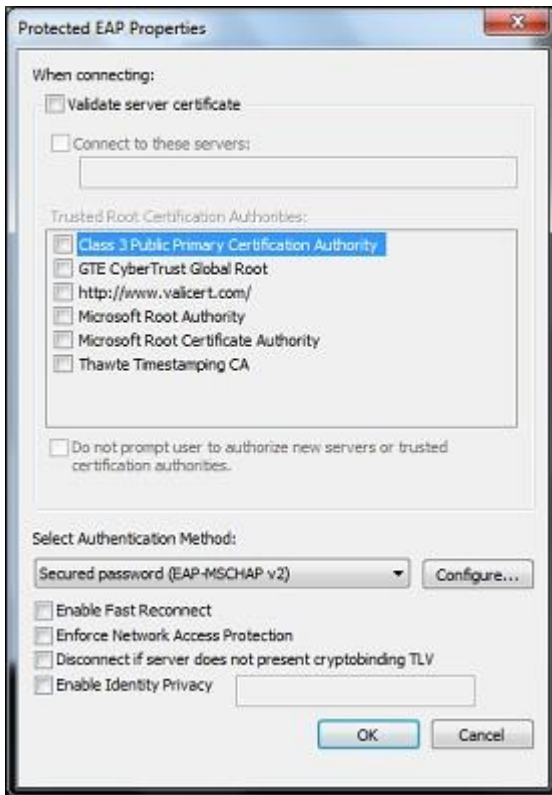
6. In the next window select the **Security** tab. Uncheck **Remember my credentials for this connection each time I'm logged on**. Click **Advanced Settings**. Click the tick box for **Specify authentication mode** and choose "User Authentication" from the drop down menu. Click on save credentials and enter your VLE username and password. This is the same username and password for the VLE and email. Then click **settings**



7. In the next window **uncheck** the following:

- Uncheck **Validate server certificate**
- Uncheck **Enable Fast Reconnect**

Make sure **Secured Password (EAP-MSCHAP v2)** is selected and click **Configure...**



8. In the next window ensure that **Automatically use my Windows logon name and password** box is **unchecked**.



9. Click **OK** all the way back out.

10. A box should appear above the task bar. Click it. (If this box does not appear, click on the internet connection in the task bar, select STM - BYODWPA2 and click connect)

11. Enter your **VLE username and password** and click **OK**.



You should now be connected to the STM - BYOD Secured Wireless network.